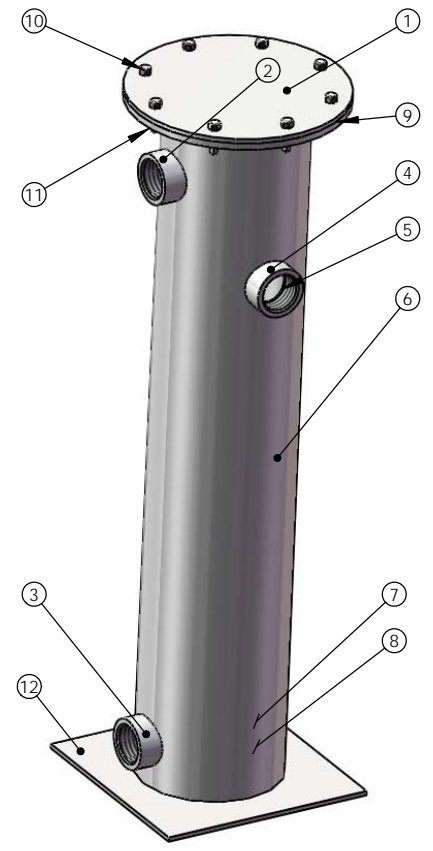
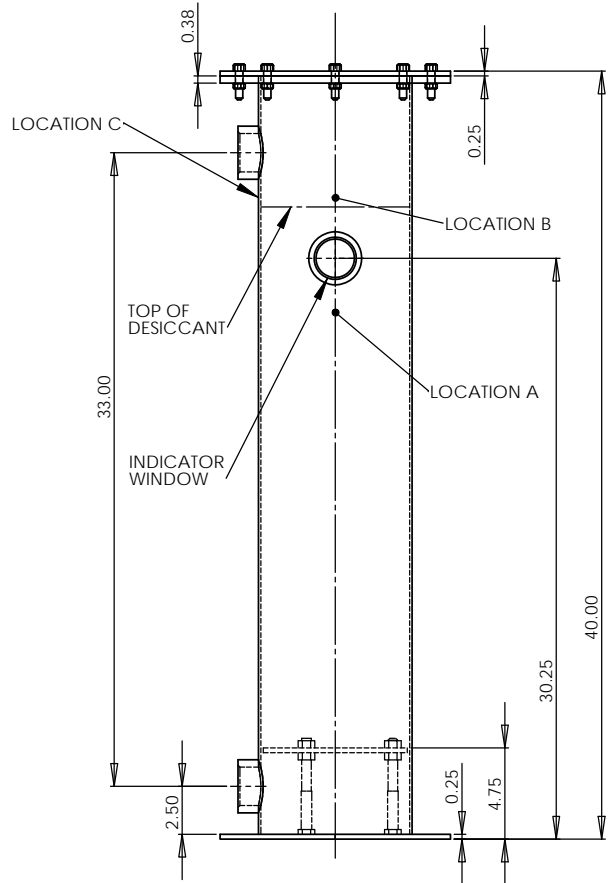
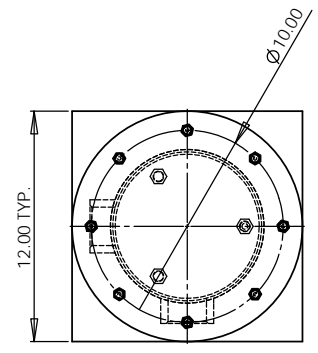


# NOTES

- DESICCANT CAPACITY 50 LBS.  
DUCAL DRIERITE STOCK # 41050  
1/4 LB INDICATING DRIERITE STOCK # 21001
- MAX WORKING PRESSURE: 10 PSI



- TOP COVER: 1/4" SHEET; MILD STEEL
- 2" NPT OUTLET COUPLING (PURCHASE MODIFY)
- 2" NPT INLET COUPLING (PURCHASE MODIFY)
- 2" NPT COUPLING (PURCHASE MODIFY)
- 2" NPT GLASS SIGHT WINDOW (USE TEFLON SEALANT)
- TOWER: 8" OD ROLLED SHEET X .125" THICK  
Ø8.5" MESH 304SS SCREEN (ATTACHED TO GRATE WITH EIGHT 3" X .032" SS WIRES)
- STEEL GRATE AND SUPPORT LEGS
- Ø9.75" NON-ASBESTOS COMPOSITION GASKET
- (8X) 3/8-16 X 1.5" GRADE 5 BOLTS ZINC PLATED
- (8X) 3/8-16 GRADE 5 NUTS ZINC PLATED
- BOTTOM

**PROPRIETARY AND CONFIDENTIAL**  
THE INFORMATION CONTAINED IN THIS DRAWING IS THE SOLE PROPERTY OF W.A. HAMMOND DRIERITE CO. ANY REPRODUCTION IN PART OR AS A WHOLE WITHOUT THE WRITTEN PERMISSION OF W.A. HAMMOND DRIERITE CO. IS PROHIBITED.

		UNLESS OTHERWISE SPECIFIED:		DRAWN		NAME		DATE		W.A. HAMMOND DRIERITE CO. P.O. Box 460 Xenia, OH 45385... Phone (937) 376-2927 Fax (937) 376-1977 www.drierite.com e-mailto:drierite@aol.com	
		DIMENSIONS ARE IN INCHES		CHECKED		CZG		11-16-07		TITLE:	
		TOLERANCES:		ENG APPR		X		X		STORAGE TANK VENT DRIER MODEL 105	
		FRACTIONAL ±		MFG APPR		X		X		SIZE	
		ANGULAR MATCH ± BEND ±		D/A		X		X		DWG. NO.	
		TWO PLACE DECIMAL ±		COMMENTS:						C	
		THREE PLACE DECIMAL ±		FINISH		ENAMEL GREY				REV	
		INTERPRET GEOMETRIC TOLERANCING PER:		APPLICATION		DO NOT SCALE DRAWING				SCALE: 1:5	
		MATERIAL: ALL PARTS MILD STEEL UNLESS NOTED								SHEET 1 OF 1	
		NEXT ASSY									